



Welcome!

A Helpful Guide for New Scientific Staff

Welcome!

A warm welcome to the Department of Computer Science at ETH Zurich, and congratulations on your new position!

It can take a while to settle into a new job, especially if, like many of us, you have just relocated to Switzerland to join ETH. To help you get started, we have compiled this guide with some helpful information about ETH Zurich and the Department of Computer Science. Even if you are not new to ETH, some of this information may still be useful to you.

This brochure has been provided to you by VMI, the Association of Scientific Staff at D-INFK. We represent the interests of all non-faculty scientific staff, including doctoral students, postdocs, and research assistants, and we are here to support you during your time at ETH Zurich. We collaborate with CSNOW, the Network of Women in Computer Science at D-INFK, to promote inclusivity in our department. On a practical note, we assist you with any work-related queries and resolve any issues or conflicts that may arise.

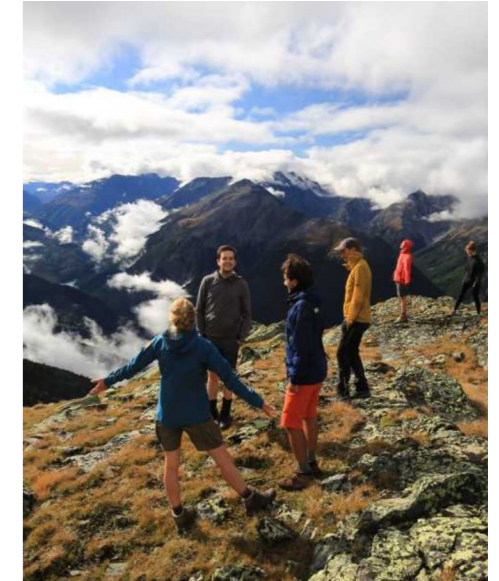
We host a variety of exciting events to provide opportunities for you to make new friends and reconnect with old ones - from board game nights and pub quizzes to barbecues, paint nights, hikes, and more. Be sure not to miss our annual Summer Retreat! It is our largest and most popular event, and for good reason – participants spend four days together in a beautiful location, exchanging scientific ideas, networking, and enjoying summer activities.

Keep an eye out for our emails, or visit our website for an up-to-date record of our past and upcoming activities. We look forward to seeing you soon at one of our events and hope you have a smooth start and a fantastic time at ETH Zurich!

Warmly,

Your VMI board

PS: Find more helpful information in the section "How to get started at D-INFK" on our website www.vmi.ethz.ch/getstarted.



Founded on March 7, 2001 by former Mittelbau member Michael Baumer, VMI represents the interests of the scientific staff, provides information and support and fosters networking and collaboration.



Contents



Orientation

6

The Department of Computer Science (D-INFK)

The department has grown significantly, with 600+ staff members and multiple buildings. Learn about its structure, locations, and core values.

13

Getting around at ETH

ETH Zurich has two campuses: the main Zentrum and Hönggerberg. All D-INFK buildings are located in or near Zentrum, or in Oerlikon. Find out how to quickly and easily navigate between these locations with our short overview.



14

Work

14

Associations for Scientific Staff

ETH Zurich has various student associations that offer support and representation. Utilize their services and connect with peers who share similar interests.

16

Scientific Staff: Rights and Duties

Scientific staff at ETH Zurich have additional duties beyond their research activities. Learn more about these duties and regulations in this section.

20

Services and Infrastructure

No matter if you are starting your first day, searching for helpful work tools, in need of communication support, or navigating life as a scientific staff member, this section (especially the "Survival Guide") is packed with lots of useful information.



20

Perks and leisure

22

Offers and Benefits

Explore ETH Zurich's services, from childcare to car sharing, to make your work and life easier.

24

Leisure

Life at ETH can be demanding. A well-organised work environment, a supportive social network, and a healthy work-life balance are therefore crucial. Discover our ideas for a break and time out from everyday life, whether for a short trip or a day out.



24

Decoding

25

Abbreviations and Wiktionary

People at ETH use many abbreviations and Swiss German expressions. To help you out, we have compiled a list of the most common ones.

The Department of Computer Science

The Department of Computer Science (D-INFK) has grown significantly in recent years, currently employs over 600 staff members and is housed in several buildings. Discover how the department is structured, get an overview of all locations and learn more about the core values that guide us.

Embedding in ETH Zurich

Switzerland is a federal nation, and ETH Zurich is one of only two federal universities in Switzerland, the other being EPFL in Lausanne (EPF is the French translation of ETH) in the french-speaking part of Switzerland.

ETH Zurich and EPFL are part of the ETH Domain, which also includes the Swiss Federal Institute of Aquatic Science and Technology (Ewag), the Swiss Federal Institute for Forest, Snow and Landscape Research (WSL), the Swiss Federal Laboratories for Materials Science and Technology (Empa) and the Paul Scherrer Institute (PSI), which conducts research in the fields of matter and materials, energy, environment and health. These institutions each operate autonomously and are overseen by the ETH Board, which reports to the Federal Department of Economic Affairs, Education and Research in the Swiss government.

The roots of ETH Zurich go back to 1855, when the founders of modern Switzerland created this place of innovation and know-

ledge. Today, ETH is organised in 16 departments and covers a broad academic spectrum.

The Department of Computer Science is one of the 16 departments. ETH Zurich does not organise departments into schools or similar larger units, but D-INFK, along with four other departments – Mechanical Engineering (D-MAVT), Electrical Engineering (D-ITET), Biosystems Science and Engineering (D-BSSE), and Materials (D-MATL) – are together categorised as “Engineering Sciences”.

For more information on ETH Zurich's mandate, figures, strategy, historical facts, and more, please visit the website: www.ethz.ch/en/the-eth-zurich

About the Department

The history of computer science at ETH Zurich stretches back to the late 1940s. ETH had one of the first digital computers in continental Europe and offered programming classes using it as early as 1952. The new field continued to grow at the university over the next decades. A research group for computer science was established in 1968 and was elevated to the status of an institute in 1974. In 1981, ETH Zurich introduced its first graduate-level course in computer science and founded the Division for Computer Science, which later became the Department of Computer Science (D-INFK).

Today, 45 professors from all over the world conduct their research and teach at D-INFK. Around 380 doctoral students and 110 post-doctoral and senior researchers contribute to maintaining the department's high level of teaching and research. Around 1,420 Bachelor's and 1,270 Master's students currently benefit from this excellent academic environment.

As a department we maintain longstanding, traditional ties with electrical engineering and mathematics. Department researchers increasingly interact with other disciplines including physics, mechanical engineering and the life sciences. We collaborate with numerous external centres and labs when developing certain topics, as part of joint research programmes or during outreach activities. Latest examples include the ETH AI Center and the Cyber Defence Campus.

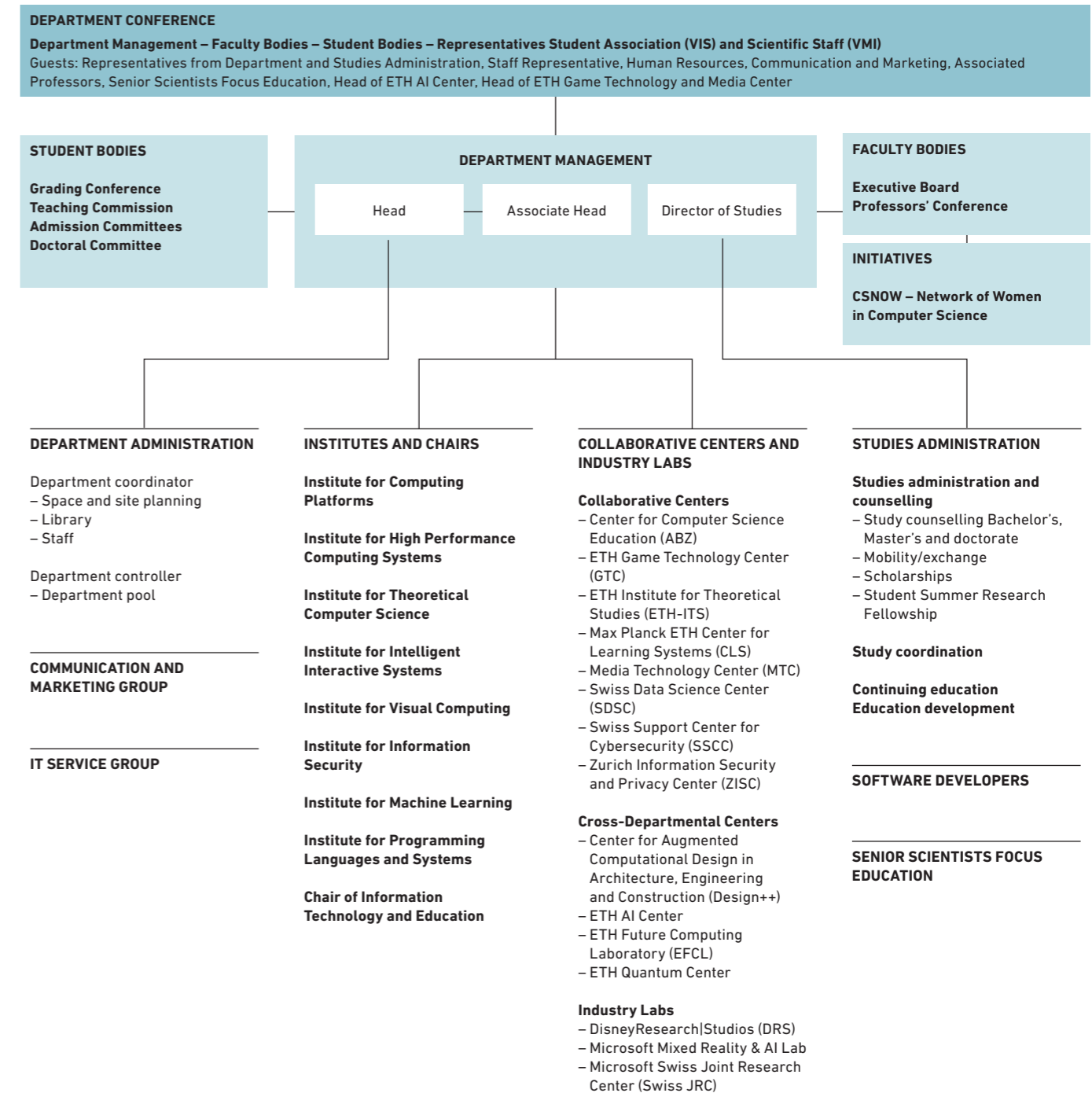
Close cooperation with scientists abroad is an integral part of our research culture. The department participates in intensive research collaborations with global IT players and research centres.



The department's main building, CAB, was originally built in 1886 to house ETH's chemistry department. The listed building retains much of its original character, including the historic chemistry lab, which has been preserved and serves as a study space today.

Organisational Structure

The following organisational chart summarises the management structure of the department, along with the roles, responsibilities and relationships of the different positions within it.



Head of Department / Departementsvorsteher (DV)

The department head or DV is the formal representative of the department and serves as the interface between the faculty and ETH's administration, including in the regular meetings between members of ETH's management. The DV is responsible both for the overall development of the department, which involves functions such as formulating strategies, hiring staff and developing other plans, as well as day-to-day operations as head of the department staff. The DV chairs the decision-making bodies described below (Department Conference, Professors' Conference and Executive Board) and ultimately answers to ETH's central management for the personnel, financial and infrastructural resources of the department. Heads of department are elected by the Department Conference and serve for a minimum of two years.

Director of Studies / Studiendirektor (DoS)

The director of studies (DoS) oversees all teaching-related activities in the department, including formulating teaching assignments, designing or revising curricula, and running admission processes. The DoS oversees the teaching staff, assigns lecturers to courses and is ultimately responsible for ensuring teaching quality. Like the head of department, the DoS serves for a minimum of two years, but changes of DoS generally do not take place in the same year as changes to the DV in order to provide further continuity. The DoS represents the department in all matters related to teaching and acts as the liaison between the Rector of ETH Zurich and the several Vice Rectors governing educational and curriculum matters at ETH. The department-level structure of department head and director of studies thus mirrors the top-level management structure of ETH Zurich, which consists of a President and a Rector.

Executive Board / Departementsausschuss (DA)

The Executive Board of the department comprises the department head, the associate department head, the director of studies, a representative of the administrative/technical staff and additional professors; in addition, the department coordinator and department controller also participate in DA meetings in a non-voting capacity. The DA is responsible for several important functions in the department. It approves the annual budget and decides how departmental resources (personnel, financial and infrastructural) are to be distributed. It also supports the department head to ease some of their workload. The DA meets once every two weeks during the semester and less frequently during semester breaks.

Department Conference / Departementskonferenz (DK)

The Department Conference (DK) is the principal governing body within the department. It is an assembly consisting of all professors plus representatives of students and both academic and non-academic staff. The DK elects the department's management (the department head, director of studies and other members of the DA), approves changes to the departmental by-laws, decides the departmental strategy, approves doctoral theses, determines the profiles of faculty openings, oversees the appointment of guest professors, handles affiliations with external faculty and deals

with any teaching issues that arise. The DK meets four times a year, at the start and end of each semester.

In addition, three sub-committees – the Teaching Commission (Unterrichtskommission or UK), the doctoral committee and the student admission committee – prepare and review proposals for the DK on a range of teaching issues such as the course programme, external doctoral reviewers and the formal acceptance of doctoral theses. The student admission committee also interacts closely with ETH's management, in particular the Rectorate, for the admission of external Master's students and proposals for excellence scholarships.

Professors' Conference / Professorenkonferenz (PK)

The Professor's Conference (PK) comprises all the professors in the department. It meets once a month during the semester and less frequently during the summer break. The PK decides on the promotion of faculty (assistant to associate professor; associate to full professor) and on proposals for honorary doctors.

Institutes and Chairs

Internally, ETH faculty are organised into lightweight organisational units called institutes. Institutes consist of around three to five faculty members associated with a particular area of research (e.g., theoretical computer science or visual computing), and typically (though not always) members all come from the same department. Externally we present our faculty as described on the website under Research Areas. Each professor has its own research group, often referred to as a lab.

www.inf.ethz.ch/department/organisation/organization
www.inf.ethz.ch/research

Collaborative Centres and Industry Labs

In addition to individual groups/labs and institutes made up of several professors, our department leads, hosts or participates in several centres. Centres are often virtual and built around a particular topic of research or an important external outreach initiative. The structure and make-up of centres varies; for example, they might be fully internal collaborative centres, cross-departmental centres spanning ETH Zurich as a whole, or public centres with participation from industry, other universities and public bodies. Moreover, some companies have established research and development labs and "tablets" that are closely associated with the department.

www.inf.ethz.ch/department/organisation/centers

Department Administration

The department is run by the department head in close collaboration with the department coordinator and department controller. The coordinator's main responsibility is to carry out operational and planning functions and oversee day-to-day administrative activities. The coordinator also heads the staff unit resources for infrastructure and the library, while the controller manages the department's finances.

Studies Administration

The department maintains a Studies Administration and Counseling office for students of all levels. This office acts as a point of contact and help desk for students and faculty on all matters related to teaching, course scheduling, exam organisation, resource allocation, course catalogues, teaching appointments, admissions, mobility and career advice. The office serves as the interface to the office of the Rector, the four Vice Rectors for Curriculum Development, Doctoral Studies, Study Programmes, and Continuing Education, and other ETH entities related to education from the legal department to the admissions office.

Senior Scientists Focus Education

A team of around 10 Senior Scientists Focus Education support D-INFK, mainly by teaching computer science to students of other departments. In addition to various short or compact courses, the service teaching team delivers more than 20 semester courses per year at 11 departments. For this, the lecturer team manages more than 200 assistants (doctoral students and student assistants) per year.

IT Service Group

The IT Service Group (ISGINF) provides high-quality IT services and support for the department. ISGINF focuses on delivering department-wide facilities that are either not sufficiently provided by the central ETH IT services, that cater to the specific needs of a computer science department, or are innovative in nature relative to what is available across the rest of ETH. In a few cases, ISGINF also supports the research infrastructure of particular research groups.

www.isg.inf.ethz.ch

Communication & Marketing Group

The Communication and Marketing Group at D-INFK works closely with the central corporate communication division (HK). Its role is to provide internal and external communication aligned with the department's goals and image.

www.inf.ethz.ch/communication-services



Founded in 2008 and located in Zurich, close to our buildings STD, STF and WWA (see page 10), DisneyResearch|Studios (DRS) is part of a broad innovation ecosystem and partners closely with ETH Zurich and our department.

Locations

The number of faculty in the department has grown considerably in recent years, and space has become a major issue. At present, the CAB building (with the CNB extension) is our main building and houses a significant number of department employees.

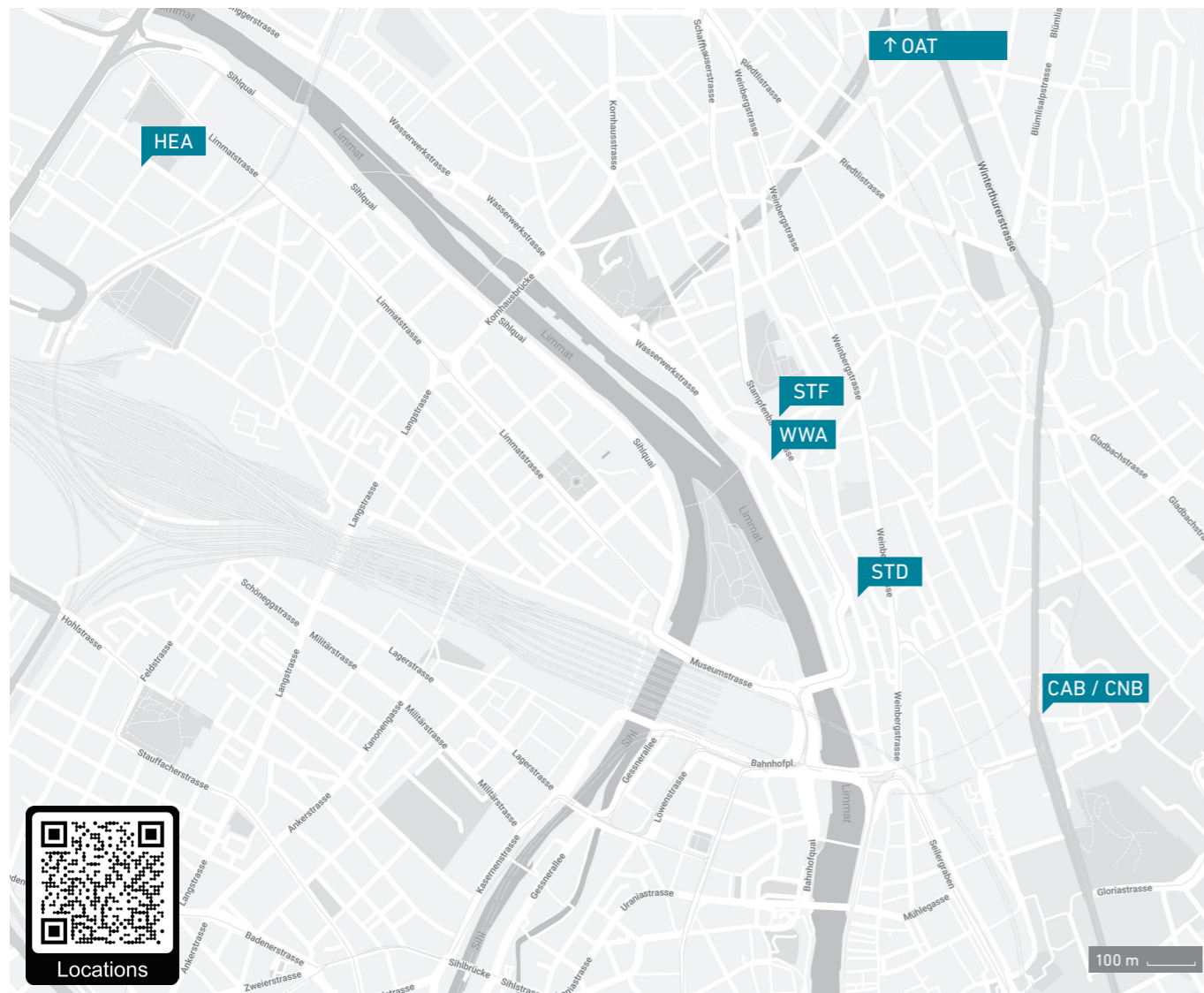
Building	Address
CAB, CNB	Universitätstrasse 6, 8092 Zurich
HEA	Heinrichstrasse 237, 8005 Zurich
OAT	Andreasstrasse 5, 8050 Zurich Oerlikon
STD	Stampfenbachstrasse 48, 8092 Zurich
STF	Stampfenbachstrasse 114, 8092 Zurich
WWA	Wasserwerkstrasse 10/12, 8006 Zurich

The distance between the buildings is roughly 10 to 25 minutes by foot or public transportation. There are constantly changes in our building occupancy. Usually, the address in the people section on the D-INFK website is correct, but it is best to double-check before heading to a meeting. Find an overview of all locations, including addresses here: www.inf.ethz.ch/department/location

Good to know: 8092 is the official postal code of buildings in Zentrum Campus. If you are expecting non-postal deliveries (e.g. pizza), prefer the local index 8006 for all buildings, except HEA (8005) and OAT (8050).

Opening hours and access

The opening hours of the buildings vary, but the main buildings are typically open from 07:00 to 20:00. After hours, you can access your building with your ETH card (Legi) and personal PIN code. www.ethz.ch/staffnet/en/service/rooms-and-buildings/schliessmanagement/elektronische-schliessung



Rooms and Spaces

Rectorate rooms

The Academic Services is responsible for managing the rectorate rooms, including teaching rooms (auditoriums and seminar rooms) on the ETH Zentrum and Hönggerberg campus, meeting rooms, the Alumni Pavilion, the Audi Max (HG F 30), the Semper Aula (HG G 60) and the Siemens Auditorium (HIT E 51).

Each department has one main contact for handling the teaching room bookings for the coming semester. At D-INFK, please contact the Student secretariat at studiensekretariat@inf.ethz.ch.

For more information about the rectorate rooms, please visit the following link:

www.ethz.ch/staffnet/en/service/rooms-and-buildings/rectorate-rooms

Full room list:

www.rauminfo.ethz.ch

D-INFK meeting rooms

Some of the meeting rooms, group resources, open spaces, and multimedia equipment in our buildings CAB, STD, STF, and OAT can be booked directly. However, please be aware that some rooms have time restrictions on access. For more information and to book, please visit:

www.isg.inf.ethz.ch/Main/ServicesBookingsRooms



Top

In April 2023 several professors and their groups moved to Andreasturm (OAT) in Zurich-Oerlikon.

Middle

Most of the teaching and meeting rooms, including those in CAB, are managed by Academic Services.

Bottom

Don't forget to validate your ETH card every semester.

Code of Conduct and Respect

At ETH Zurich, people from different cultural backgrounds, roles, and disciplines come together to study, research, and work. We believe that diversity is one of our strengths, and we are committed to maintaining a welcoming and inclusive environment where discrimination, bullying, threats and violence, or harassment of any kind will not be tolerated.

We treat each other professionally and with mutual respect, regardless of our background. Everyone, including professors, students, lecturers, research and administrative staff, technical staff, and academic guests, is responsible for upholding these values.

If you experience any inappropriate behavior, please visit www.ethz.ch/respect for more information or to seek help. Let's work together to create an environment where everyone feels welcome and respected.



Respect



Diversity is a key strength of ETH Zurich and central to its reputation as a leading international university. Professor Andreas Krause with his former Master's student Yihui Ma, Software Engineer at Google, and his former doctoral student Josip Djolonga, research engineer in the Google Brain team in Zurich.

Getting around ETH

ETH Zurich has two campuses, the main Zentrum campus and Hönggerberg. All D-INFK buildings are located in Zentrum or nearby. Get a brief overview and learn how to move easily and quickly between the different locations.

Campus

The Zentrum campus is located in the center of Zurich and features historical buildings from the 19th and early 20th centuries, as well as more recent additions.

The ETH Zurich Zentrum campus, with its historic Main Building (Hauptgebäude or HG), embodies the university's traditional roots and is a lively center for socializing and studying.

The modern ETH Zurich Hönggerberg campus is situated on the outskirts of the city. It is a perfect example of the links between science, industry, and the general public, which is why it won the European Cultural Award for Science in 2010. Surrounded by nature, this campus includes buildings for research and education, sports and housing facilities, and much more.

Transportation and Mobility

ETH eLink

The ETH-owned eLink buses operate multiple times an hour between the Zentrum and Hönggerberg campuses from Monday to Friday. The ETH eLink is fast and free for everyone holding an ETH card (Legi). More information and the timetable can be found at: www.ethz.ch/students/en/campus/transport-mobility/science-city-link

Public transportation

Public transportation in Zurich, and in Switzerland in general, is very well-developed but not cheap. As an ETH employee, you receive financial support for either a Half-Fare Card (Halb-Tax) or a General Abonnement (GA). Please see the chapter "Benefits" on page 22 for more information.

VBZ Züri Linie timetable for buses and trams can be found at: www.stadt-zuerich.ch/vbz/en

SBB Swiss Federal Railways timetable can be found at: www.sbb.ch/en

Bikes

Cycling is very popular in Zurich. You can get around quickly, keep fit, and it's cheap too. Good to know: Here in Switzerland, we call our bikes "Velo," not "Fahrrad" like in Germany.

Check out attractive offers and services in the "Offers and Benefits" section on page 22.



Every day, hundreds of ETH members commute between the Zentrum and Hönggerberg campuses by the electrically powered eLink shuttle bus.

Associations for Scientific Staff

Next to VMI, there are several overarching and subject-specific associations that provide support and representation for scientific staff. Take advantage of their helpful services and amazing offers, too, and connect with like-minded people.

Association of Scientific Staff in Computer Science (VMI)

The VMI, or Association of Doctoral Students and Researchers at the Department of Computer Science, is a member of AVETH, the Academic Association for Scientific Staff at ETH. We are committed to creating an inclusive environment while pursuing three main goals for D-INFK's scientific staff: representation, support, and connection.

Organised by the community, for the community

Our activities are managed by around six executive board members, but many members actively participate in organising events and serving as committee representatives. We are mainly funded by the department.

Representing your interests

We represent scientific staff in department decision-making bodies and maintain close contact with the faculty to directly represent our members. We try to support members in various situations and are happy to help with questions and concerns, from settling in to resolving conflicts with supervisors.

Welcoming and supporting members

As a new member of the scientific staff you are invited to the annual welcome event to familiarize yourself with the department and to receive advice on how to make the most of your time at D-INFK. We also support researchers nearing the end of their time at ETH by organising career panels and networking opportunities. Through such events, we create a supportive environment for sharing knowledge and addressing concerns.

Fostering personal and scientific growth

We are dedicated to promoting personal and scientific growth by organizing a variety of social and academic events. These events allow our members to get to know the department and their colleagues better, learn new things, and simply have some fun.



The VMI summer retreat is both a social occasion and a platform for scientific exchange among the department's scientific staff. Don't miss it!

We also coordinate the Scientific Excellence & Well-Being Initiative, which focuses on promoting mental strength and soft skills through workshops on various topics, including work-life balance, teaching and student supervision, imposter syndrome, perfectionism, and prioritization.

Mentoring programme

In collaboration with CSNOW, the Network of Women in Computer Science at ETH, we have started a mentoring programme to help young women scientists find a suitable mentor within their faculty.

Events and activities

Summer retreat:

We organize an annual summer retreat for all scientific staff at D-INFK, where we spend four days full of social and academic events in a beautiful part of Switzerland. All VMI members are encouraged to take part at least once!

Social events:

We organise many attractive events throughout the year. Some highlights are paint and crafts evenings, pub quizzes, dinners, and game nights.

Career events:

To support our outgoing members, we organise career events, where we invite speakers from academia and industry to share their insights on career paths in computer science.

How to join VMI

Members of the scientific staff of the Department of Computer Science at ETH Zurich who are members of AVETH are automatically members of VMI. The scientific staff includes doctoral students, postdocs, and senior scientific employees of the department (excluding professors). As a doctoral student, you can become a member of VMI by choosing the option to register with AVETH when enrolling for the next semester or by registering directly with AVETH. As a post-doc or senior staff member, you must choose the second option.

The membership fee for AVETH is CHF 48.00 per year for doctoral students. To join VMI, just must become a member of AVETH, our parent organization. If you are Doctoral student, you can join during the registration for the upcoming semester on Mystudies. Alternatively, you can fill in the 'How to become active' form on AVETH's website: www.aveth.ethz.ch/joinus

Academic Association for Scientific Staff at ETH (AVETH)

While VMI is the department-level association, AVETH, the Academic Association of Scientific Staff at ETH Zurich, is the ETH-wide parent organisation that represents scientific staff across all departments. Apart from representing scientific staff politically in ETH committees, AVETH provides a wide range of useful services that are not specific to any particular department.

www.aveth.ethz.ch

Association of Computer Science Students (VIS) and VSETH

While the VIS (short for German "Verein der Informatikstudierenden") represents all Bachelor's, Master's, and Doctoral students at the Department, VSETH is the umbrella organisation covering all ETH students.

The VIS has a strong focus on topics concerning Bachelor's and Master's students, such as studies and courses, but also offers many extracurricular activities for its members. Some of these events are purely social, such as fondue evenings or end-of-semester brunches. Others, like company excursions, seminars, job fairs and symposia, are designed to help students network and learn. Two VIS committees help students participate in competitive programming and capture-the-flag competitions.

Every spring semester, VIS organises the Kontaktparty, the largest academic IT recruiting fair in Switzerland, where students can meet around 100 companies and establish connections with potential employers. VIScon, the biggest student conference at ETH Zurich, consists of a one-day symposium accompanied by a 48-hour hackathon as well as talks and workshops on computer science and entrepreneurship.

Doctoral students can register with both VMI and VIS, which can be worthwhile to take advantage of the VIS events in addition to those of the VMI. VIS membership costs CHF 35.00 per semester.

www.vis.ethz.ch
www.vseth.ethz.ch



Network of Women in Computer Science (CSNOW)

The Network of Women in Computer Science (CSNOW) is funded by the department and comprises students of all levels as well as postdocs and scientific staff.

Women are still underrepresented at our department. The goal of CSNOW is to draw attention to this gender imbalance and counteract it. To this end, CSNOW organises activities designed to increase women's participation across the various study programmes and to support women at the department. CSNOW is supervised by a D-INFK professor and spearheaded by two postdocs or doctoral students. Support comes from a pool of student assistants and volunteers.

The main activities of CSNOW include putting on events, establishing mentoring programmes for women students, and organising a try-out computer science week for women baccalaureate school (high school) students.

www.csnow.inf.ethz.ch



Top

The try-out computer science week (Schnupperstudium), taking place twice a year, is one of the main activities initiated and organized by CSNOW.

Bottom

Role models are important. Assistant professor Shweta Shinde (left), was one of the speakers at the event "How to get a faculty position", organised on the occasion of the 40th anniversary of D-INFK in October 2021. Dr. Anwar Hithnawi leads the Privacy Preserving Systems Lab within the Systems Group.

Scientific Staff: Rights and Duties

Scientific staff at ETH Zurich includes doctoral students, postdocs, and other scientific employees, excluding professors. This chapter presents some specific aspects of doctoral studies, as well as assisting in teaching, which is a central part of the duties of scientific staff.

Doctoral studies

As a doctoral student, you are both an employee and a student. In order to successfully complete your doctorate, you have to fulfill some additional duties besides your actual research activities.

You have the right and the duty to continue your education. You must earn at least 12 credits where one credit corresponds to a workload of between 25-30 hours.

According to the regulations in effect since 2022, you must choose at least one course/activity from the three following areas:

1. Consolidation of knowledge

- Courses on Master's or doctoral level from ETH or University of Zurich
- D-INFK institute / doctoral colloquia (with presentation)

2. Transferable skills

- At least 1 credit by attending an event on the theme of ethics and good scientific practice
- Courses/workshops on "social and personal competencies," offered by D-GESS. Upon request to the doctoral committee, other courses can be allowed (requests have to be submitted to the D-INFK doctoral coordination).
- Didactic courses and a range of courses for the teaching diploma/teaching certificate
- Language courses offered by the UZH/ETHZ Language Center
- Collaboration in boards/committees/university bodies such as the VMI board or the department conference (minimum duration of one year)

3. Integration into the scientific community

- Summer schools
- Conferences outside of ETH with talks/posters

The full information on your duties, all required forms, and helpful guides for your doctoral plan, the aptitude colloquium, and the doctoral exam can be found here:

<https://inf.ethz.ch/doctorate/doctoral-study-program>

D-INFK doctoral coordination:
CAB F 62, doctorate@inf.ethz.ch

PhD vs. Doctorate

Some people at ETH use the term "PhD" when they actually mean "doctorate". However, this is incorrect. Why is that?

The reasons are manifold: the internationalisation of the university, the anglicisation of the university system through the Bologna reform, or linguistic imprecision.

At ETH, for example, many people use the term "PhD" when they actually mean the title of doctorate, which is the highest academic degree awarded by ETH. The Anglo-Saxon PhD (actually "Philosophiae Doctor") has little in common with the "Doctor scientiae" at ETH. While a PhD can take many forms, the doctorate at ETH is primarily based on the independent and original scientific research of the doctoral student. This special feature is a sign of quality and deserves to be conceptually distinguished from the "PhD".

Please use the correct terminology in official documents.



Doctoral studies

The Aptitude Colloquium

Aptitude colloquia were introduced with the new doctoral ordinance in 2022, and the first colloquium at the department took place in October 2022.

At the end of the first year of your doctorate, you must present your doctoral plan in an aptitude colloquium. Members of the VMI attended some of the first aptitude colloquia, and we would like to share our impressions with you.

The aptitude colloquium is divided into two parts: a presentation of your doctoral plan and a Q&A session. Afterwards, you leave the room (or virtual meeting), and the committee decides whether you have passed the colloquium. The aptitude colloquium is not open to the entire department, but your supervisor decides who is allowed to attend. At least your supervisor, your second advisor, and the chair of the aptitude committee will be present. Some supervisors allow a broader audience, which typically means that members of your institute are invited.

Based on our experiences as attendees of aptitude colloquia, the atmosphere is friendly and relaxed. Doctoral students start by motivating their field of research and continue with the goals as presented in the doctoral plan. They typically spend 30-50% of the

presentation on the first goal, for which they can already demonstrate some progress.

The committee expects to hear about your achievements so far (e.g., submitted papers or possible contributions towards a paper) and goals for the future. For the latter, there is a focus on how to approach the goals from a methodological perspective. For the committee, the purpose of the aptitude colloquium is to assess whether you are on track to succeed in your doctorate. This means whether you can convince the committee that you can conduct independent research and that you have a good understanding of related work in your field.

You can expect to receive a few critical questions during the Q&A part, e.g., questioning your proposed approach to tackling a particular problem. However, these questions can be anticipated. You will probably have discussed them in meetings with your supervisor before the colloquium. In the first year of your doctorate, you familiarize yourself with your research field, read up on related work, and exchange ideas with your supervisor and colleagues. This is all it takes to master your aptitude colloquium. We wish you the best of luck!

Find regulations and further information regarding the doctoral plan and the aptitude colloquium at www.inf.ethz.ch/doctorate.



Former doctoral students Gregor Seiler (left) and Daniel Jost at work.

Teaching

At ETH Zurich, assisting in teaching is a central part of the duties of the scientific staff. Within the department, there is a system of teaching points that balances the teaching load between groups. It is expected that all scientific staff earn one teaching point per semester on average. Typically, this involves serving as a teaching assistant (TA) for one course. As a TA, you will hold weekly exercise or lab sessions and assist with exam preparations and supervision. Some positions may offer multiple teaching points, such as coordinating a large course as head TA, which may earn you two teaching points. However, it is important to note that this can vary depending on your supervisor, so it is best to confirm with them.

There are three common types of teaching activities for academic staff:

Exercise sessions

For most courses, the lecture is accompanied by weekly exercise sessions held in groups of approximately 25 students. This frequently involves repeating material from the lecture, grading, and discussing exercise sheets that students have submitted.

Lab sessions or projects

Some courses use a different format where exercise sessions are replaced by lab sessions or projects. In these cases, there is usually less focus on blackboard-based teaching and more emphasis on offering assistance and feedback to students.

Supervision of student theses

Scientific staff should also supervise student theses at the Bachelor's and Master's levels. Students work on their project for six months, have to submit a written report and generally hold a short presentation to the group about their work.

The majority of Bachelor's courses are held in German, and these courses make up the bulk of teaching duties. Therefore, if you want to teach a class in English, it is worth looking for a course to teach sooner rather than later. It is also helpful to ask colleagues within your research group for recommendations and tips for courses.

All courses and their tutoring are managed with ETH Zurich's TA tool. Doctoral students must register in HAT and indicate the courses they would like to teach by marking them and expressing their interest. HAT is also the tool where doctoral students have to submit their teaching assignment once they have agreed on a collaboration with a professor.

More information on teaching:
www.lehrbetrieb.ethz.ch/hat
www.ethz.ch/staffnet/en/teaching

ETH's academic year

ETH Zurich divides the academic year into two semesters: an Autumn Semester (HS), which lasts from September to December, and a Spring Semester (FS), which begins in February and ends at the end of May or in June. Examinations for courses in each semester usually take place shortly before the next semester begins, i.e., in January and August.

www.ethz.ch/staffnet/en/news-and-events/academic-calendar



Former doctoral students from the Data Analytics Lab in discussion. Paulina Grnarova (third from left) has since completed her doctorate and is now co-founder and CEO of DeepJudge, a D-INFK spin-off that builds AI systems to support legal practices.

It is important that you have a basic understanding of the structure of the study programmes offered at D-INFK.

Currently, approximately 2,500 students are enrolled in the Bachelor's and Master's programmes, and the number continues to grow.

Computer science studies are offered as a 3-year Bachelor's programme (180 ETCS) and a 1.5 to 2-year Master's programme (90 to 120 ETCS). ETCS stands for European Credit Transfer and Accumulation System (cp).

Additionally, the department has developed the Master's programmes in Data Science and Robotics, Systems and Control, in collaboration with other departments at ETH Zurich. In 2019, the Master's programme in Cyber Security was added as a joint-degree program in collaboration with EPF Lausanne.

More information:
 Bachelor's: www.inf.ethz.ch/studies/bachelor
 Master's: www.inf.ethz.ch/studies/master

Bachelor of Science ETH in Computer Science 3 years / 180 cp

1st year	Mathematics	Fundamentals in Computer Science	Digital Design
2nd year	Mathematics	Fundamentals in Computer Science	Supplement & SiP
3rd year	Core Computer Science Courses	Elective courses	Seminar
		Bachelor's thesis	Supplement & SiP



Master of Science ETH 2 years / 120 cp, resp. 1.5 years / 90 cp

4th year	Computer Science 2 years / 120 cp Consecutive. Open access from Bachelor's degree.	Cyber Security 2 years / 120 cp Joint-degree programme with EPFL. Consecutive. Open access from Bachelor's degree.	Data Science 2 years / 120 cp Specialized Master's programme with admission process.	Robotics, Systems and Control 1.5 years / 90 cp Specialized Master's programme with admission process.
5th year				



Doctor of Sciences (Dr. sc. ETH Zurich) 4–5 years

Doctoral studies



Services and Infrastructure

No matter whether you are starting your first day, seeking helpful work tools, looking for support, or navigating life as a scientific staff member, this section (and the "Survival Guide" in particular) is packed with loads of useful information.

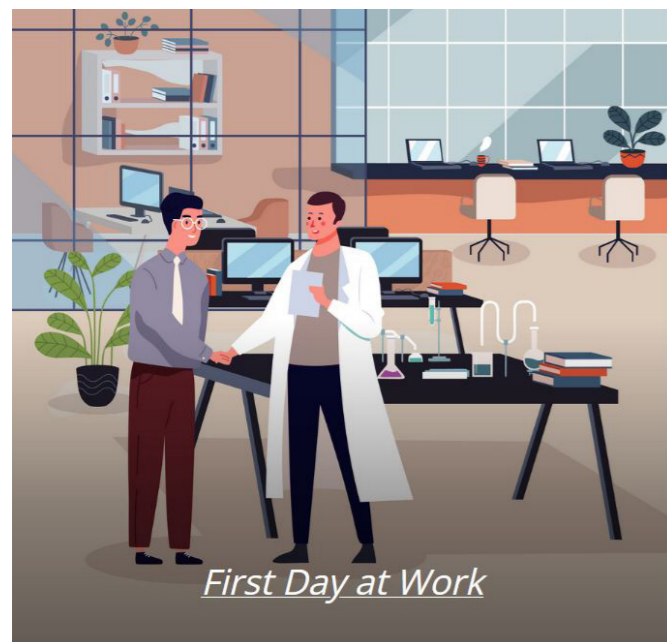
Survival Guide by AVETH

AVETH is the association for scientific staff at ETH Zurich. As described on page 16, they represent all doctoral students, postdocs, and senior researchers.

With over 20,000 Bachelor's and Master's students, 4,460 doctoral students, 2,150 scientific staff, 527 professors, and 3,106 technical and administrative staff (numbers from 2021), ETH Zurich can seem like a giant labyrinth at first. This is why AVETH has designed a must-read book called "Survival Guide."

The "Survival Guide" provides helpful information regarding the objectives, possibilities, and consequences of being an ETH student, employee, researcher, and teaching assistant - all at the same time. It covers many of the administrative and logistical issues of starting out and working at ETH, and provides tips for enjoying your stay and life in Zurich.

www.aveth.ethz.ch/aveth-survival-guide



The "Survival Guide" is organised according to the timeline of a typical doctoral study period.



Survival guide

ETH Staffnet

The ETH Staffnet Portal is a kind of public intranet with password-protected areas. Most of the information we explicitly refer to in this brochure, and much more, can be found here. Whether it is about employment issues, the maintenance of personal data, benefits, information about responsibilities or services for daily work: you will find it here.

www.ethz.ch/staffnet/en

Counseling Services

Helpdesk

If you need someone to talk to about personal or professional issues, the VMI Helpdesk is here for you. Run by volunteers from the department, this confidential service offers a listening ear from colleague to colleague, and provides guidance on relevant ETH offices and services. Contact: vmi-helpdesk@lists.inf.ethz.ch

Professional psychological support

Whether you are dealing with academic challenges, personal stress, work-related obstacles, stressful situations, or conflicts in the workplace, relationships, or family, the Psychological Counseling Services at ETH and the University of Zurich are there for you. For more information, visit: <https://www.pbs.uzh.ch/en>

HR Consulting

The HR Manager assigned to D-INFK reports to the Development and Leadership Unit and supervises, advises and supports the departmental management, the line managers and the employees in all matters of human resources lifecycle, from recruitment, employment, payment and development to leaving. Contact: <https://inf.ethz.ch/people/administration/hr-finance>
More info: <https://ethz.ch/staffnet/en>

IT Services

Our IT Service Group (ISGINF, page 9) provides a wide range of services, such as client backups, personal storage, user accounts, personal git repositories, and personal home pages. The service desk is located in CAB E 48 (9:30-11:30, 13:30-16:30), and you can open a ticket by contacting support@inf.ethz.ch. Visit www.isg.inf.ethz.ch for more information.

Communication Services

Corporate Communications (CC)

Corporate Communications (CC), or Hochschulkommunikation (HK) in German manages ETH Zurich's internal and external communications. They work in partnership with communication professionals in the departments, professorships and central administrative units.

Templates, logos, images and guidelines

CC offers a wide range of helpful guidelines, toolkits and templates for your daily work. Whether it's for your next presentation, a poster session, or a scientific publication, check out the website and download up-to-date material. Visit www.ethz.ch/staffnet/en/service/communication for more information.

Communication Academy

Doctoral students, postdocs, and professors are increasingly involved in direct exchange with society, politics, and business. Whether in traditional or social media, in the context of public events, or in the form of texts, presentations, or interviews, this dialogue places special demands on communication skills. ETH's Communication Academy offers free basic courses and workshops to enable you to communicate in a comprehensible and compelling way to a non-scientific audience. Find more information here: www.ethz.ch/staffnet/en/service/communication/communication-academy

Communication & Marketing Group D-INFK

Our Communication & Marketing Group takes care of the department's official communication channels (e.g. website, social media, digital signage), writes and publishes articles and news items, and organises internal and external events (e.g. Master's celebration, Computer Science Days, Study Information Days). They produce marketing material and handle inquiries of schools, universities or companies for department visits. Media work is done in close cooperation with the ETH media relations team.

Newsletter:

At the end of each month, you will receive the department newsletter READ.ME in your inbox with the latest news, insights, and more. Provide your feedback and content ideas directly to the team: communications@inf.ethz.ch. READ.ME archive: www.inf.ethz.ch/news-and-events/Read.Me-department-newsletter

The D-INFK mascot:

Originally introduced in 2018 to emotionalize giveaways at young talent promotion events and school visits, the owl now also enjoys great popularity within the D-INFK community. Stickers for laptops or mobile phones are particularly in demand among students. Get your stickers at the VIS office, the study administration, or contact the D-INFK communication team.

For more information and support, visit the service-platform www.inf.ethz.ch/communication-services-staff or contact the communication team at communications@inf.ethz.ch.

Locations for Creativity

Student Project House

The Student Project House is a space built for the thriving creative community within ETH. It's the place where Bachelor's, Master's, and doctoral students gather to experiment, test out concepts, work on group projects and build tomorrow's ideas. Work on your ideas, get support through coaching and workshops, and explore possibilities for seed funding. At the Makerspace, you can learn how to use various machines and build your own prototypes.

www.sph.ethz.ch

Electronics Lab "Bastli"

"Bastli" is an electronics lab provided by the Academic Mechanical and Electrical Engineering Association (AMIV). It offers free workstations and tools to implement your own projects and ideas. No previous knowledge is required; the main goal is to enjoy building things. During opening hours, you can get the material you need directly from AMIV and their internal component shop in the CAB building.

www.bastli.ethz.ch



Top

The owl stickers are currently available in transparent, white, and holographic finishes.

Bottom

The mission of the Student Project House is to inspire and empower students to cultivate a maker and innovator mindset today, so that they can create a better tomorrow.

Offers and Benefits

From childcare to car sharing - ETH Zurich offers a range of attractive services to make working and living easier. Below are a few of the many offers available to you.

ETH card

The ETH card (legi) acts as an electronic and visual identity card. It entitles you to reduced rates in restaurants and cafeterias of ETH and the University of Zurich, among other benefits. In addition, students receive discounts for cinemas, museums, and other institutions. The card grants you access to the library, ASVZ, and the free ETH eLink bus. Change your address, personal data, and badge pin at www.adressen.ethz.ch.

Discounts on public transportation

Within Zurich, a dense network of trams and buses can get you to most places. Check out www.zvv.ch for fares and travel cards. If you commute from outside the city, check out www.sbb.ch for monthly or yearly travel cards. If you just want to hop on a tram, bus or train, you can use the check-in feature in the SBB app. It will automatically buy you the right tickets and works across Switzerland – just don't forget to check out again once you have reached your destination!

ETH offers attractive discounts on public transport: ETH employees at doctoral level and above with a workload of at least 50% for at least six months receive a free SBB half-fare travel pass (Halbtax) or a discount voucher of 25% on the SBB annual travel ticket (GA), which allows you to use - almost - all public transport in Switzerland without further costs. Both the half-fare travel pass and the GA are loaded onto a SwissPass, which you must order first. The SwissPass is very handy as it can be used with many services in Switzerland, e.g. you can load ski tickets onto it. The above-mentioned requirements must be met by the start of the validity of your subscription. Please note that you must order your half-fare travel pass or GA voucher from the ETH Travel Office, not directly from SBB! Externally financed guests and employees are not entitled to this service.

www.ethz.ch/staffnet/en/finance-and-controlling/travel

Car sharing offers

Together with ETH Zurich, Mobility car sharing makes environmentally-friendly driving especially attractive. ETH staff and students can benefit from the Mobility special offer.

www.ethz.ch/staffnet/en/service/eth-card/functions/mobility-car-sharing-offers

Bike sharing

ETH provides bike parking spaces, stations with bike pumps and tools. You can also use attractive bike-sharing schemes. Check it out: www.ethz.ch/students/en/campus/transport-mobility/velo

If you consider buying your own bike, we have some tips for you:

www.provelozuerich.ch	www.velomarkt.ch
www.velocorner.ch	www.veloboersa.ch
www.ricardo.ch	www.anibis.ch
www.pro-velo.ch	www.ronorp.net

Sports Facilities

Physical activity and a healthy lifestyle are part of the university's culture. The Academic Sports Association Zurich (ASVZ) provides state-of-the-art athletic facilities and over 120 different activities and sports, including outdoor activities in the beautiful mountain and lake landscape of Switzerland. You pay the membership of CHF 35.00 directly with your semester fee.

www.asvz.ch



Over 120 sports are offered in the ASVZ sports centres and in other city and cantonal facilities.

Accident insurance

In Switzerland, all employees whose salaries are subject to social insurance contributions must have insurance against occupational accidents. ETH employees are insured through the Swiss National Accident Insurance Fund SUVA, which is paid for by ETH.

Additionally, private supplementary insurance from AXA is available for CHF 14.50 per month. For details, please visit www.ethz.ch/staffnet/en/employment-and-work/employment/offers-and-benefits or scan the QR code below.



Catering and canteens

There is a diverse range of catering facilities available, with more than a dozen canteens and cafés serving mainly lunchtime meals and snacks. As a member of ETH Zurich you benefit from discounted prices.

There is a variety of canteens around the main ETH Zentrum campus. The largest by far are the Polymensa (officially "Mensa Polyterrasse") and the UZH mensa. The Clausiusbar in the CLA building specialises in Asian food and is considered by some to be one of the best canteens. But try it out yourself!

During the semester, canteens can get crowded during peak lunchtime (12:00). To avoid long queues, we recommend going either for early lunch at 11:30 or late lunch at 12:30.

All canteens serve vegetarian options, some also vegan menus (e.g. Rämi 59, UZH main mensa and UZH Lichthof).

To meet fellow D-INFK colleagues, we suggest Food&Lab, located at CAB. This in-house canteen can be used for working outside lunch hours and can be rented for apéros and events. Tannenbar, the corner bar across the street from ETH's main building, is

known for simple lunches, sandwiches and one of the best coffees at ETH. All ETH canteens offer discounts for ETH employees and students. So don't forget your ETH card!

www.ethz.ch/en/campus/getting-to-know/cafes-restaurants-shops/gastronomy

Tastes differ, and this is especially true for food. Nevertheless, we have put together a small selection of recommendations for further restaurants and take-aways near the D-INFK locations. You have more tips? Send them to communications@inf.ethz.ch, to extend the list.

www.inf.ethz.ch/food-tips-nearby



The Food&Lab at CAB offers street and world food (hot and cold), homemade and healthy vitamin bombs, salads, sandwiches, coffee and bakery. It is part of the "Sustainable Gastronomy Project" and thus supports the long-term development towards sustainable gastronomy at ETH Zurich.

Leisure

Life at ETH can be quite stressful and demanding. This makes it all the more important to have a well-organised working environment, a strong social setting, and a good balance between work and leisure time. Have a look at the "Survival Guide" mentioned on page 20, and check out their excellent tips. Besides this, we have some more ideas for you on how to escape your daily life, be it for a short break or a day trip.

MFO-Park

Within walking distance from Andreasturm (OAT) and on the site of the former Maschinenfabrik Oerlikon (MFO), you will find this architecturally exciting park, surrounded by a steel framework overgrown with climbing plants on different levels. There are seating areas everywhere, stairs, platforms, and balconies to linger on, and on the very top, there is a sun deck. In summer, the park is popular for various cultural events, such as open-air cinemas or festivals of all kinds.

www.zuerich.com/de/besuchen/sehenswuerdigkeiten/mfo-park



The Captured Flea

Also in Oerlikon's industrial quarter, in the electricity substation, a huge perception labyrinth called "Der Gefangene Floh" with mirrors, drawings, light, and language allows insights into an underground world. The creator of this art, Yves Netzhammer, is a Swiss video and computer artist.

www.netzhammer.com/der-gefangene-floh



Patumbah Park and Villa

The development of the Patumbah Park from its creation at the end of the 19th century to the present day is an exciting piece of Zurich's cultural history. A beautiful little park, hidden in the Seefeld quartier. Especially in spring, it's a great place to enjoy nature and to relax.

www.stiftung-patumbah.ch/villa-und-park/park



Bruno Weber Park, Dietikon

Bruno Weber (1931-2011) was a painter, graphic artist, sculptor, inventor, carpenter, bricklayer, painter, plasterer, and architect. In his 15,000 m² sculpture park, you will discover mythical creatures, walk-in sculptures, and the artist's house with a unique tower. Dietikon is close to Zurich and can be reached by public transportation or even by bike. Important: Please check the opening days and hours in advance. For CHF 12.00, you can visit the park, including the labyrinth room in the tower.

www.weberpark.ch

For further ideas:

www.switzerlandbylocals.com/entdecke-die-schweiz

www.zuerich.com/de/besuchen/ausfluege-bei-zuerich

www.schweizmobil.ch

<https://famigros.migros.ch/de/ausfluege-und-freizeit/ausflugsziele>

www.tsri.ch/zh/15-ausflugsziele-der-nahe-von-zurich

Top

Through a wide front window, you can have a view of the multimedia installation "The Captured Flea" and gain unfamiliar perspectives of the switchgear room that extends 12 meters below ground.

Middle

Patumbah Park is open to the public during the day all year round. The opening hours, which change according to the season, are posted at the entrances.

Bottom

"You don't have to travel to Barcelona or Wattens to immerse yourself in fantastic worlds." Peter Conrad (lawyer of Bruno Weber). The Bruno Weber Park forms a unique world with objects that can be walked on, touched and lived in. The Bruno Weber Park was created as a counter-world to the world of technology and commerce.

Abbreviations and Wiktionary

You are likely to encounter plenty of abbreviations, as well as German and quirky Swiss German expressions, during your daily work, lunchtime, or socializing in 'Usgang' with colleagues. To help you navigate these linguistic peculiarities, we have compiled a list of the most common acronyms and terms.

A	
AMIV	Academic Mechanical and Electrical Engineering Association Student Association for students of Information Technology and Electrical Engineering (D-ITET) and Mechanical and Process Engineering (D-MAVT)
ASVZ	Akademischer Sportverein Zürich Zurich Academic Sports Association
AVETH	Akademischer Verein der wissenschaftlichen Mitarbeiter:innen der ETH Zürich Academic Association of Scientific Staff at ETH Zurich
B	
bQm	Abbreviation for "bequem", cosy student cafe & bar at ETH Polyterrasse
C	
CAB	Building at Universitätstrasse 6, Zurich
CAS	Certificate of Advanced Studies
CC	ETH Corporate Communications
CH	Switzerland
CHF	Swiss franc
CS	Computer science
CSNOW	Network of Women in Computer Science, ETH Zurich
D	
DA	D-INFK executive board
DAS	Diploma in Advanced Studies
D-INFK	Department of Computer Science, ETH Zurich
D-ITET	Department of Information Technology and Electrical Engineering, ETH Zurich
D-MATH	Department of Mathematics, ETH Zurich
D-MATL	Department of Materials, ETH Zurich
D-MAVT	Department of Mechanical and Process Engineering, ETH Zurich
D-PHYS	Department of Physics, ETH Zurich
DK	D-INFK department conference
DoS	Director of studies
DV	Head of department
E	
Eawag	Swiss Federal Institute of Aquatic Science and Technology
ECTS	European Credit Transfer and Assignment System: Credit points, semi-consistent metric of how much time investment a course requires
Empa	Swiss Federal Laboratories for Materials Science and Technology
EPFL	Swiss Federal Institute of Technology, Lausanne
Erasmus+	EU programme to support education, training, youth and sport in Europe
ERC	European Research Council
ETH	Eidgenössische Technische Hochschule Swiss Federal Institute of Technology
ETH+	Programme that uses existing reserves for research and teaching, renamed Open ETH in 2019
E.Tutorial	Online Instructions for introductory informatic courses
EU	European Union
H	
HG	ETH Hauptgebäude / Main Building

HA tool	ETH-internal online board where positions for (auxiliary) teaching assistants are advertised and managed
HK	ETH Hochschulkommunikation / Corporate Communication
I	
IAETH	Association of Computer Science Alumni of ETH Zurich
ISG	Or ISGINF, IT Service Group, provides technical support for the department
K	
KITE	Award for Key Innovation in Teaching at ETH
L	
LINK	Or eLink, shuttle Bus between Campus Hönggerberg and Zentrum
O	
OAT	Building at Andreasstrasse 5, Zurich-Oerlikon
Q	
QS	Quacquarelli Symonds World University Rankings
P	
PhD	Doctor of Philosophy, see explanation page 14
PK	D-INFK professors' conference
PSI	Paul Scherrer Institute
R	
rETHink	Project initiated by ETH President Joël Mesot, the roadmap for the university's ongoing institutional and organisational development
READ.ME	Monthly department newsletter
S	
SiP	Science in Perspective
SNF	Swiss National Science Foundation
STEM	Science, Technology, Engineering and Mathematics
SWITCH	Swiss foundation managing the .ch and .li country-code top-level domains for Switzerland and Liechtenstein
T	
THE	Times Higher Education World University Rankings
U	
UK	D-INFK teaching commission
V	
VIS	Association of Computer Science Students at ETH Zurich
VIScon	Hackathon and Symposium organised by D-INFK students
VMI	Association of Scientific Staff of the Department of Computer Science
VSETH	Umbrella organisation of all students at ETH
W	
WEF	World Economic Forum
WSL	Swiss Federal Institute for Forest, Snow and Landscape Research

Terms heard around ETH

German	English	Comments and hints
Apéro	Aperitif, Reception	An Apéro can be just a drink after work or before dinner, or a reception with drinks and snacks.
Clausiusbar, Asian Mensa	Clausiusbar, Asian canteen	Best woks in Zentrum, situated in CLA building.
Dozentenfoyer	Lecturer's lounge	The canteen for faculty and staff on top of HG with a breathtaking view.
Gipfeli	Croissant	Popular breakfast food in Switzerland, often enjoyed with a cup of coffee in the morning, sometimes with butter and jam or as part of a continental breakfast.
CAB Innenhof	CAB Courtyard	Two courtyards within the CAB building with open skies, wooden desks, tables and chairs.
Kafi (Swiss German)	Coffee	Switzerland's coffee culture is a blend of traditional Italian-style espresso drinks and a growing interest in specialty coffee and alternative brewing methods.
Kafi Crème (Swiss German)	Coffee cream	A Kafi Crème is a large cup of black coffee. The name comes from the fact that liquid cream (French: crème) is often mixed into this coffee. It is also considered the Swiss equivalent of German filter coffee, but it is not brewed using the filter method, but prepared under high pressure.
Legi (Swiss German)	ETH card	This card entitles you e.g. to reduced rates in restaurants and cafeterias of ETH and the University of Zurich. In addition, students receive discounts for the cinema, museums and other institutions.
Lichthof	Atrium	Inner courtyard with skylights, usually closed like at HG or at the CHN cafeteria.
Mensa	Canteen, cafeteria	ETH restaurants with reduced prices for students and staff.
myStudies	myStudies	Main ETH website for study-related topics. Log-in with nETHZ ID only.
nETHZ ID	nETHZ ID	Your nethz account is the key to all IT services at ETH (e.g. network, email, secure sites). In case of problems, contact ISGINF. To change your PW go to www.password.ethz.ch .
Offen, geschlossen	Open, closed	:-)
Polyterrasse	Polyterrasse	The big terrasse behind HG offers a beautiful view and is the perfect place to be at sunset. The student bar, ASVZ gym and a cash machine are right underneath.
Stange	Beer	The term "Stange" for beer is commonly used in bars and restaurants. It typically refers to a glass or pitcher of draft beer. The term "Stange" is not regulated and can have a content of 0.3 or 0.33 or 0.25 litres, but must be declared on the drinks menu.
Usgang / Ausgang	Going out / Hanging out	Swiss German word that refers to leisure activities in the evening, after work or on weekends.

Do you like Swiss German? Then you might like these websites:

www.m.schweizerdeutsch.org/#

www.idiotikon.ch

www.srf.ch/radio-srf-1/mundart

www.zuerich.com/de/besuchen/praktische-informationen/zuerichdeutsch

www.sprachenzentrum.uzh.ch

www.instagram.com/swissgermanbeginners

Would you like to add more terms to the list? Send us a message!

communications@inf.ethz.ch

ETH Zurich
Department of Computer Science
Verein Mittelbau Informatik (VMI)
Universitätstrasse 6, CAB
PO Box 81
8092 Zurich
Switzerland

www.vmi.ethz.ch
vmi-contact@lists.inf.ethz.ch

Publisher: ETH Zurich, Department of Computer Science
Content: Verein Mittelbau Informatik (VMI), Communication & Marketing Group
Layout: Communication & Marketing Group
Print: Gremper AG

Photo credits:
p. 1: Adobe Stock / p. 3, 14: VMI / p. 4, 5, 6, 11, 12, 17, 18: Ruth Erdt for D-INFK /
p. 9: DisneyResearch|Zurich / p. 11: SBB (Andreasturm) / p. 13: ETH Zürich / p. 15,
21: D-INFK / p. 4, 20: AVETH (Survival Guide) / p. 21: ETH Zurich (Bastli), Jasmin Frei
(SPH) / p. 22: Kurt Dätwyler for ETH Zurich / p. 23: SV / p. 24: Yves Netzheimer (The
Captured Flea), Andy Treuberg (Bruno Weber Park), Stadt Zürich (Patumbah Park)